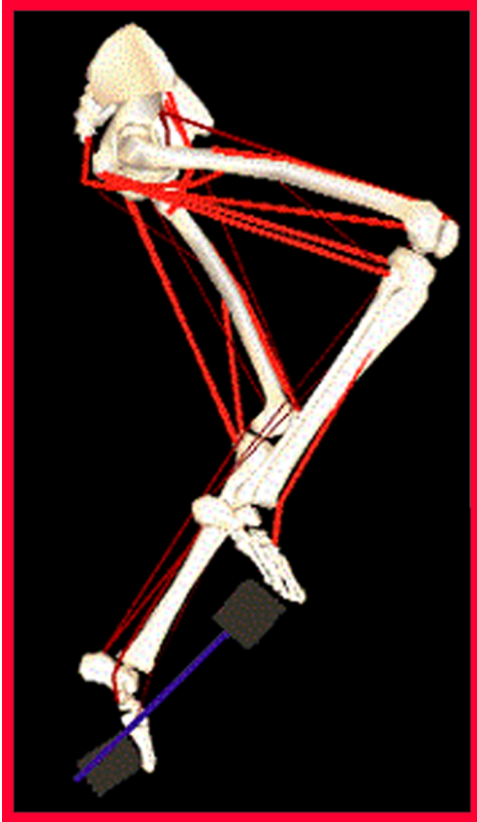


# Dynamics Pipeline

---



Dynamics Pipeline connects SIMM to SD/FAST (Symbolic Dynamics, Mountain View, CA) to simulate the dynamics of rigid-body systems. The Pipeline is a general-purpose software package that enables users to perform forward and inverse dynamics simulations on musculoskeletal models. For forward dynamics, the user specifies the on/off times of muscles - the Pipeline computes the resulting motions of the body segments. For inverse dynamics, the user specifies the time histories of the joint angles during some activity - the Pipeline calculates the torques required to generate that motion.

The Dynamics Pipeline runs on Silicon Graphics workstations and requires Irix 5.3 or higher. It also runs on IBM compatible PCs running Windows. The Dynamics Pipeline requires both SIMM and SD/FAST.

MusculoGraphics, Inc.  
A division of Motion Analysis Corp.  
3617 Westwind Boulevard  
Santa Rosa, CA USA 95403  
707.579.6500  
[www.musculographics.com](http://www.musculographics.com)



**MUSCULOGRAFICS INC.**