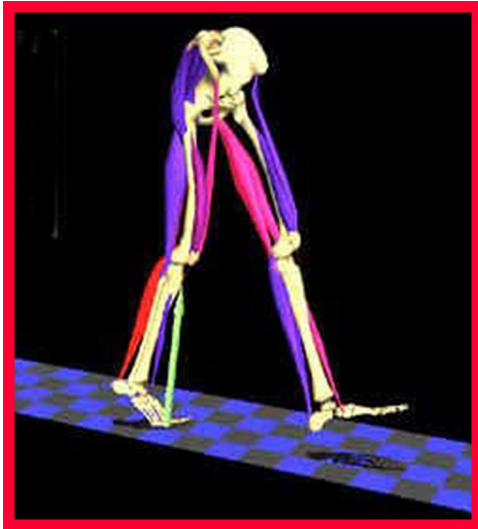


C3D Module



The C3D Module is an optional component to SIMM that has been developed to visualize results of gait analysis studies. This software is specifically designed to read in C3D files to create a three-dimensional animation showing body motion, muscle activity, and ground reaction forces. It is used by several leading motion analysis laboratories to interpret gait analysis data and to communicate results of these studies to others.

MusculoGraphics, Inc.
A division of Motion Analysis Corp.
3617 Westwind Boulevard
Santa Rosa, CA USA 95403
707.579.6500
www.musculographics.com



MUSCULOGRAFICS INC.